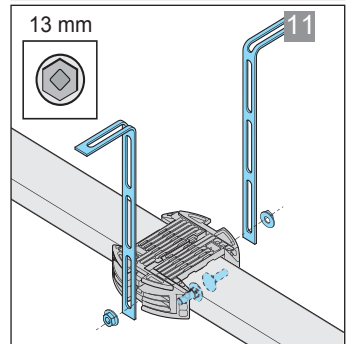
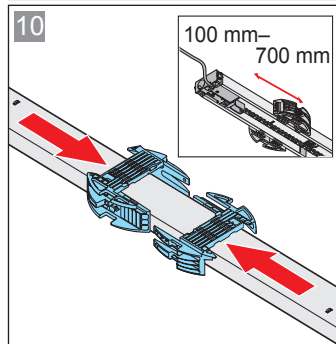
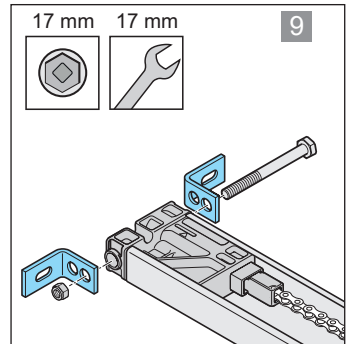
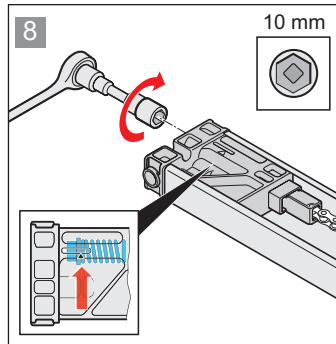
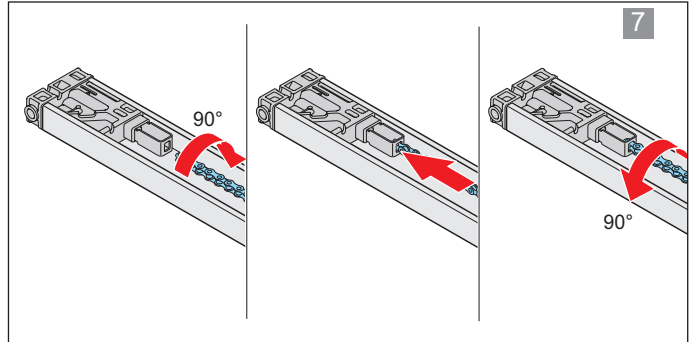
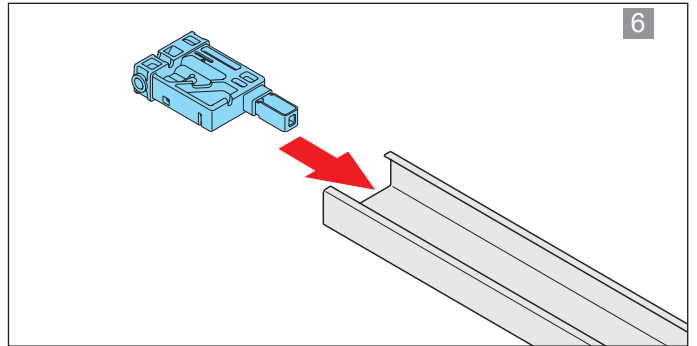
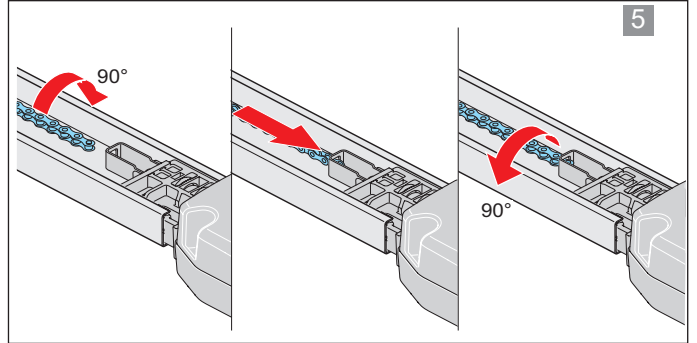
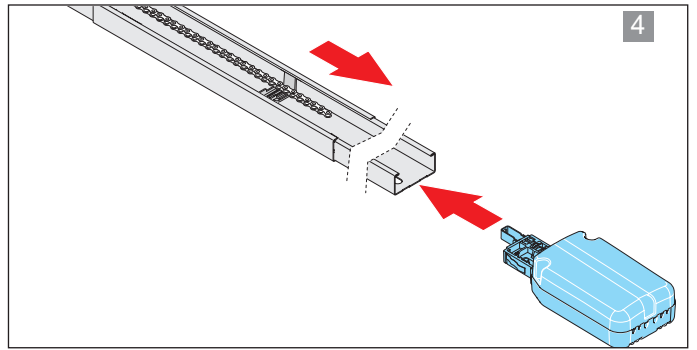
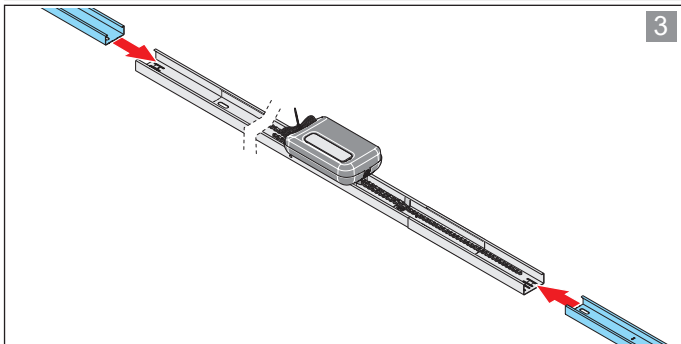
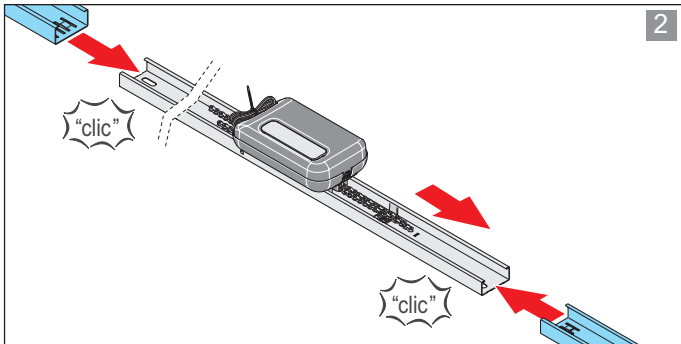
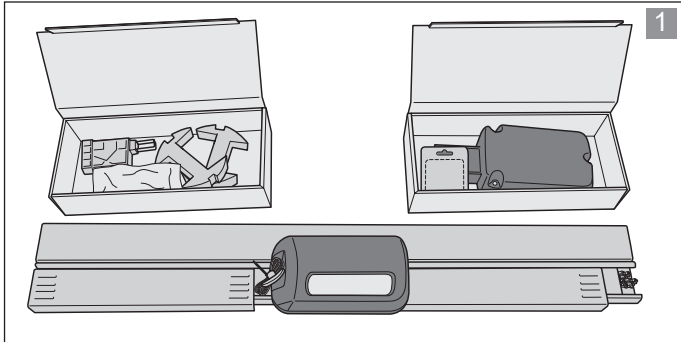
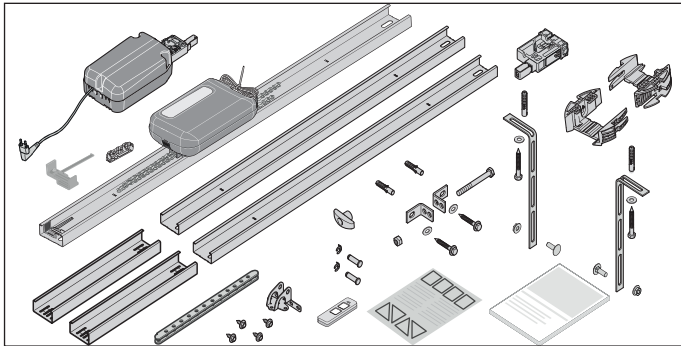
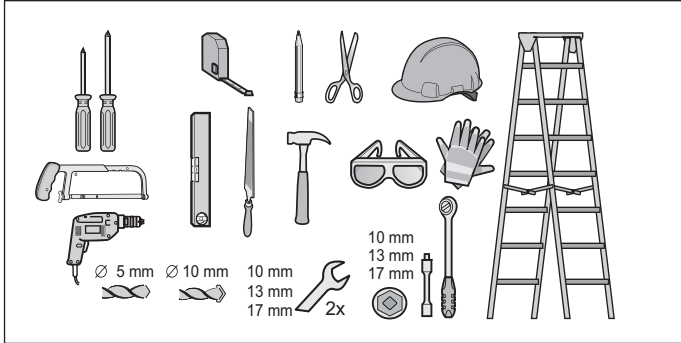
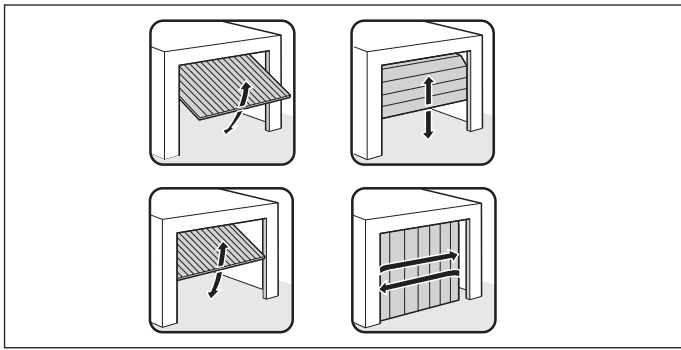


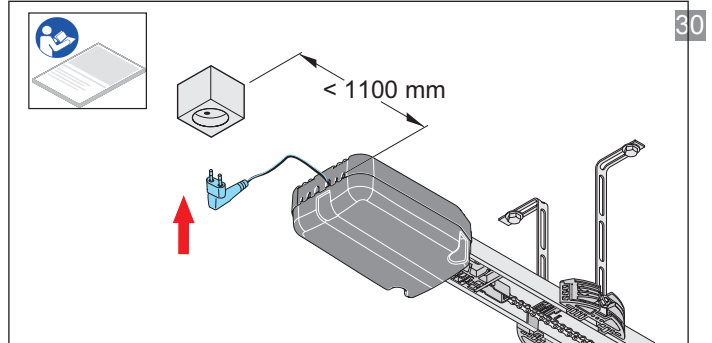
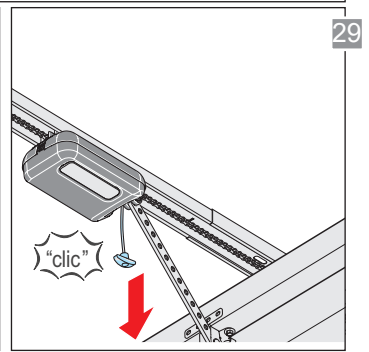
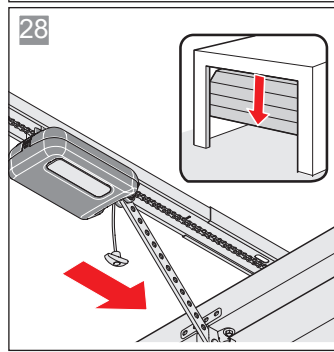
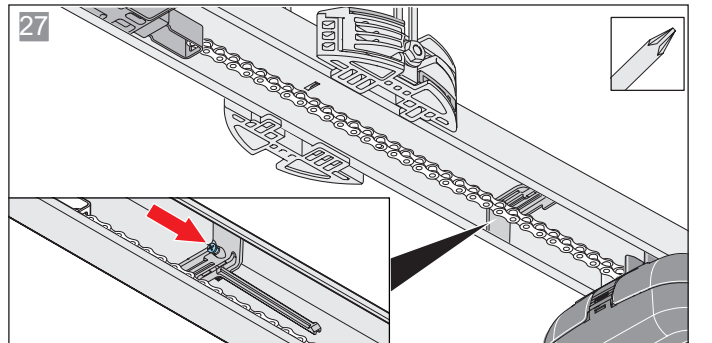
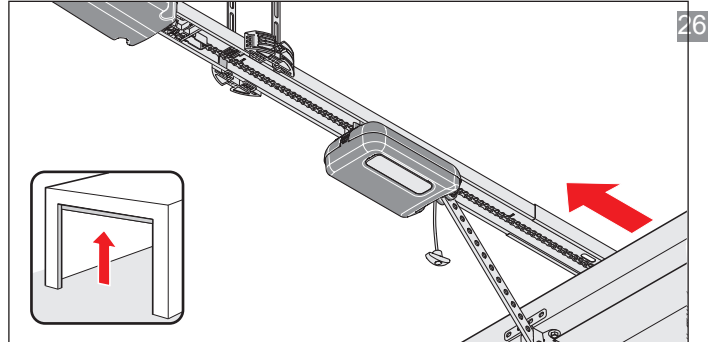
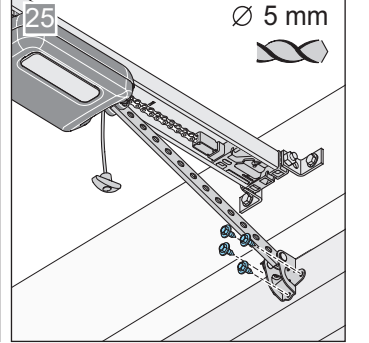
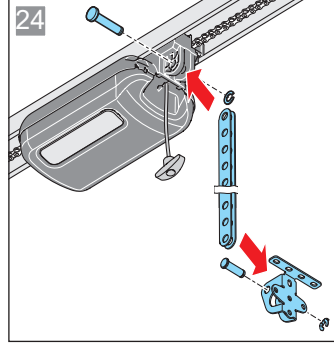
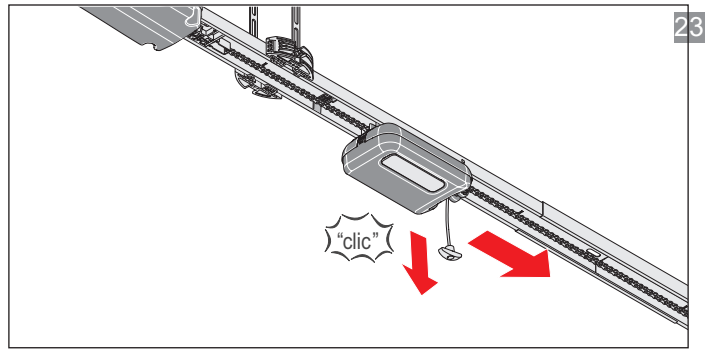
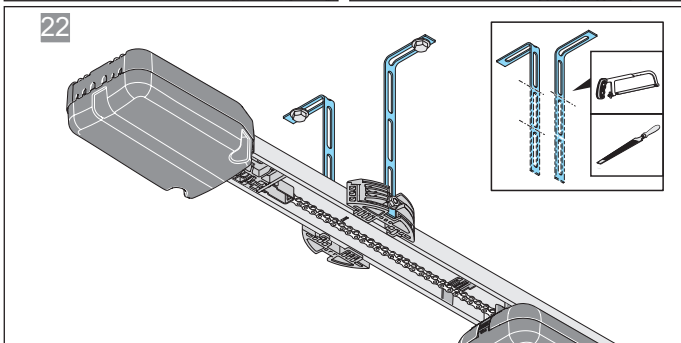
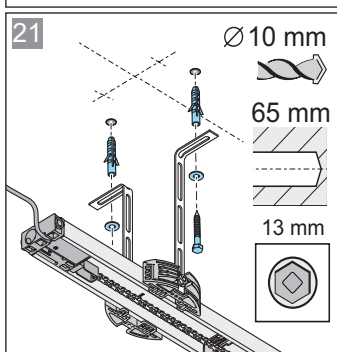
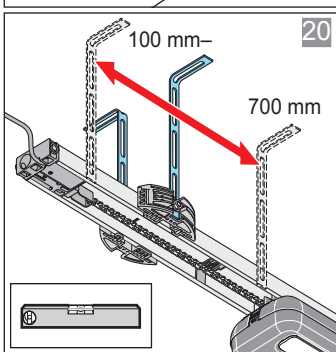
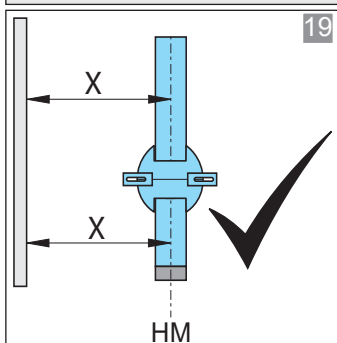
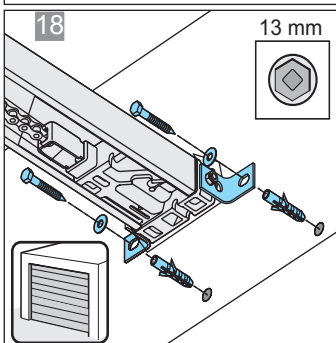
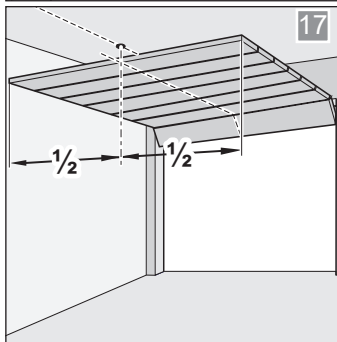
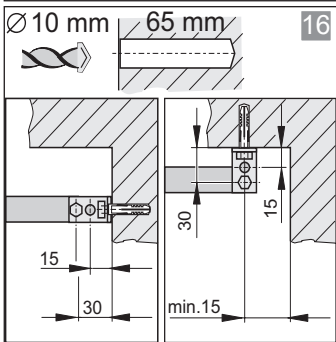
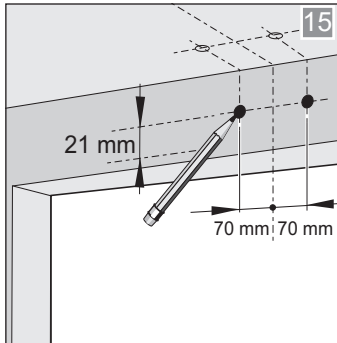
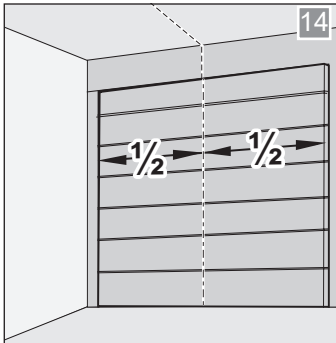
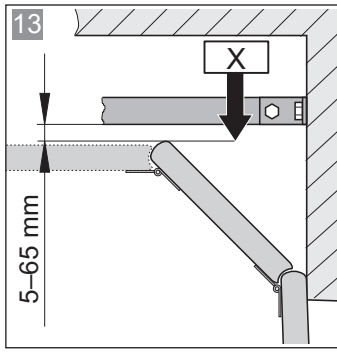
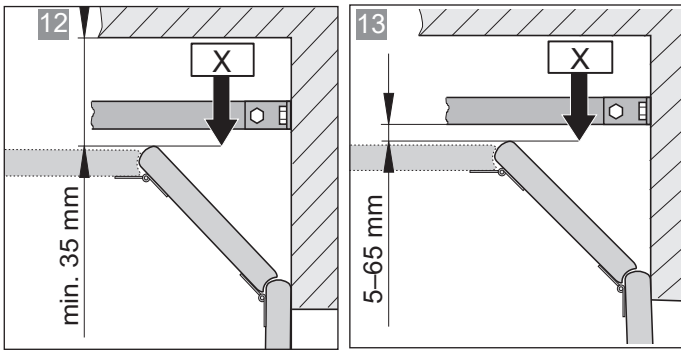
17. Guide de montage rapide

Le guide de montage rapide ne remplace en aucun cas la notice de montage et de service.

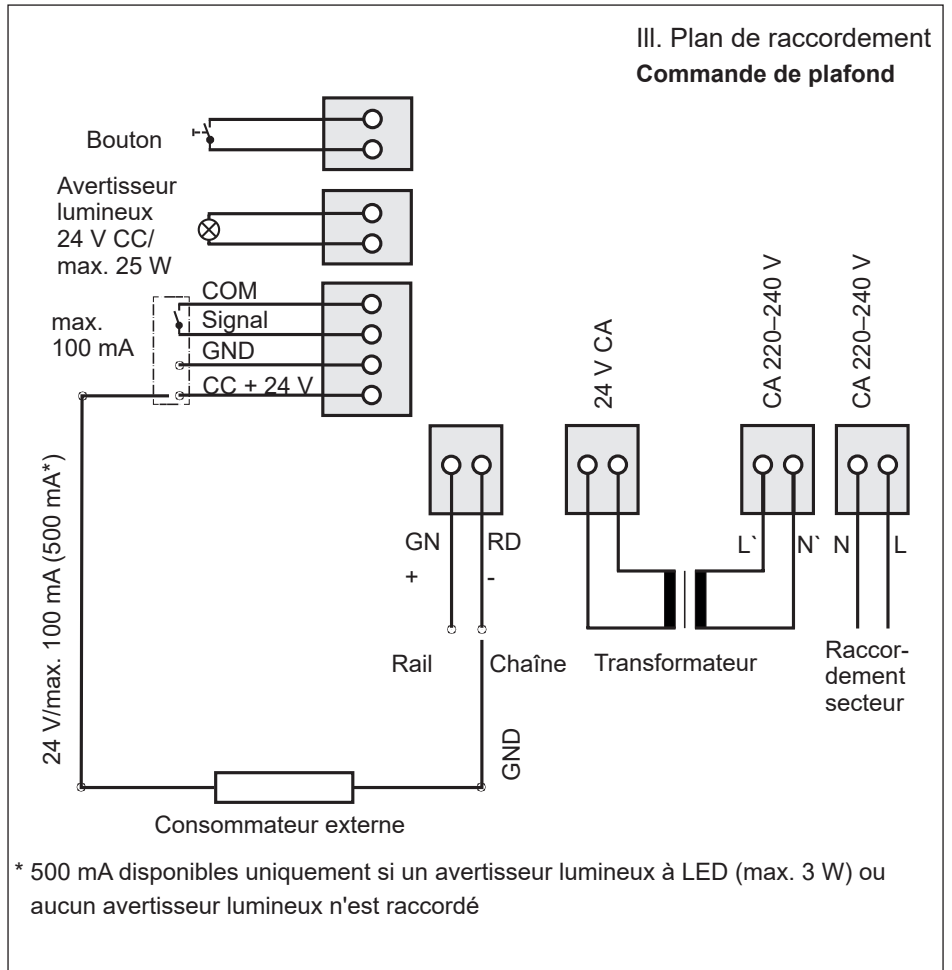
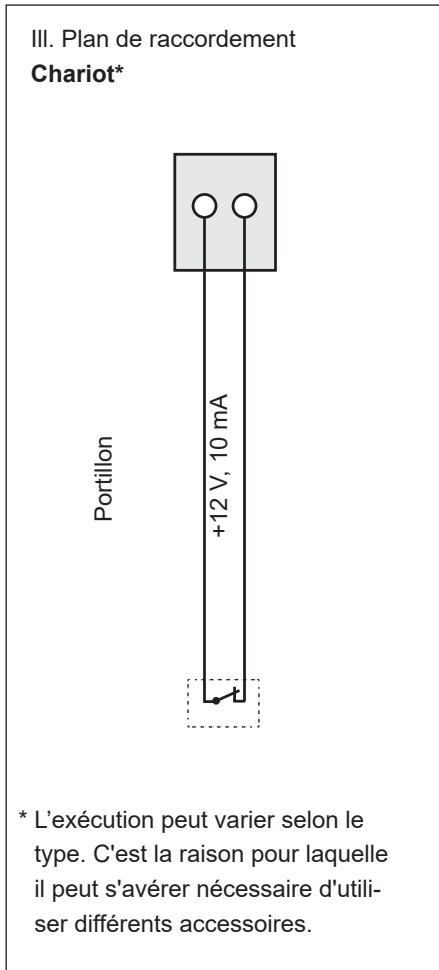
Lisez attentivement cette notice de montage et de service et respectez toutes les mises en garde et consignes de sécurité.

Ainsi, vous pourrez monter et utiliser le produit en toute sécurité et de manière optimale.


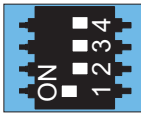
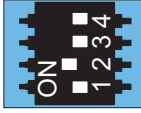
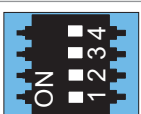
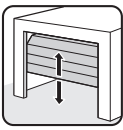
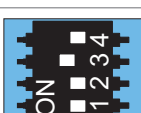
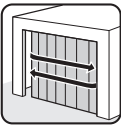
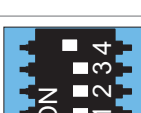
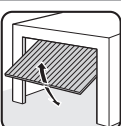









18. Plans de raccordement et fonctions des interrupteurs DIP pour A 550 L et A 800 XL



Si un consommateur externe est raccordé, le mode éco-énergie doit être désactivé afin de garantir l'alimentation électrique.

Interrupteurs DIP du chariot	ON	OFF 
	• Fermeture automatique activée	• Fermeture automatique désactivée
	• Ouverture partielle activée/ fonction d'éclairage désactivée	• Ouverture partielle désactivée/ fonction d'éclairage activée
		
		
		

Interrupteurs DIP de la commande de plafond	ON	OFF 
	• Carte supplémentaire "Conex" • T1 pour Porte OUVERTE définie • T2 pour Porte FERMÉE définie	• Carte supplémentaire "Conex" • T1 séquence d'impulsions • T2 fonction d'éclairage/ouverture partielle
	• Le Relay est activé pendant le mouvement de la porte et lorsque la porte n'est pas fermée*	• Fonction d'éclairage
	• Alimentation continue du système complet activée	• Mode éco-énergie activé
	• COM et Signal activé en tant qu'entrée du bouton (ouverture partielle)	• COM et Signal activé en tant que contact de sécurité pour la barrière lumineuse

Ex. : Affichage de l'état de la porte